

BobSmeter-Flex Instructions manual

V1/2010



BobSmeter-Flex is a freeware application for **PowerSDR** by **FlexRadio Systems** planned by **WoodBoxRadio** and written by Antonio Alliegro

You can run 2 sessions of BobSmeter-Flex, one for RX1 and other one for RX2 (only FLEX-5000A with RX2)

WoodBoxRadio



BobSmeter-Flex uses a Virtual COM to connect PowerSDR

- you can use any VCOM software available

How it works ?

BobSmeter-Flex use a Virtual COM port to connect PowerSDR and, using the CAT protocol, it reads the Smeter values. Enter the Setup, configure your ports and press Start

What do you need ?

- A Vcom driver software as N8VB, VSPE or com0com
- **PowerSDR** running and configured on a valid VCom

Can works with other software at the same time?

Yes, it can works with any software as LOG which needs a CAT connection, using VSPE in splitter configuration.

Install and execute BobSmeter-Flex

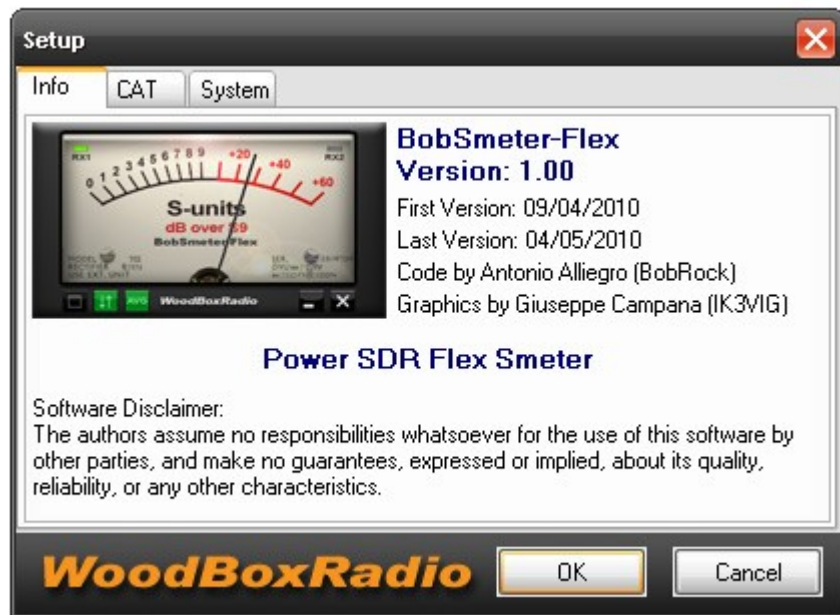
- UnZIP the files in a new folder where you want in your HD.

BobSmeter-Flex is an external application for PowerSDR, it runs only if you have a couple of Vcom installed in your system, for example COM4 and COM5 or others connected to COM4.

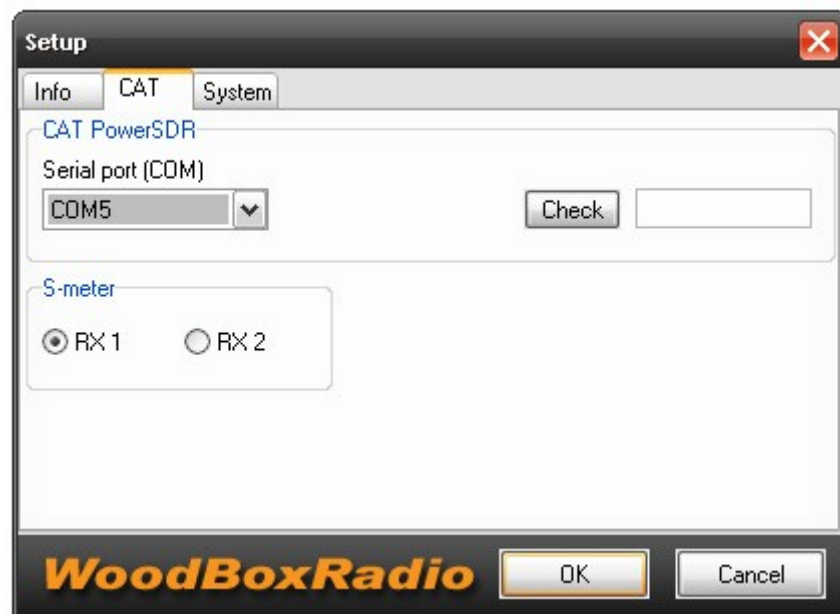
Using N8VB Virtual Com Driver you must create a pair of Vcoms named COM4 <> COM5

Using VSPE you can create a COM4 as connector Vcom and a COM5 as a splitter type referred to COM4. In this configuration COM5 is shared by any software wants connect to COM4 (PowerSDR) for many purpose as log, ecc.

Press **SETUP** to configure **BobCAT** before the **START**

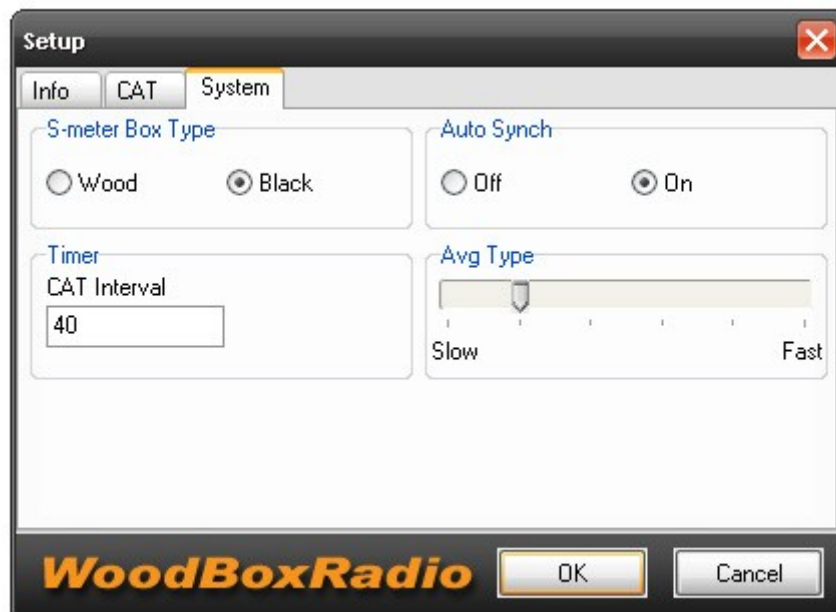


This is the Info TAB



This is the CAT TAB

- Choose the Vcom port that is coupled with PowerSDR
- Test the connection with PowerSDR pressing "Check"
- Choose reading on RX1 or RX2 (only FLEX-5000A with RX2 installed)



This is the System TAB

- Choose the Smeter Box type
- Choose Auto Synch function ON or OFF (this function automates the connection to PowerSDR at startup)
- Choose CAT Interval: this is the polling time in mS to PowerSDR (check the best for your System)
- Choose Avg Type: Slow or Fast

Note: BobSmeter-Flex is an application "Always on TOP" on your desktop.

Note: If you share the Vcom used on BobSmeter-Flex with other software, start BobSmeter-Flex after all others software.

Note: you can run 2 sessions of BobSmeter-Flex, one for RX1 and other one for RX2 (only FLEX-5000A with RX2)

BobSmeter is freeware application planned by WoodBoxRadio and written by Bob (Antonio Alliegro)
If you like and use this software, please donate to support it.

This manual is written by IK3VIG Beppe – 01 May 2010

WoodBoxRadio