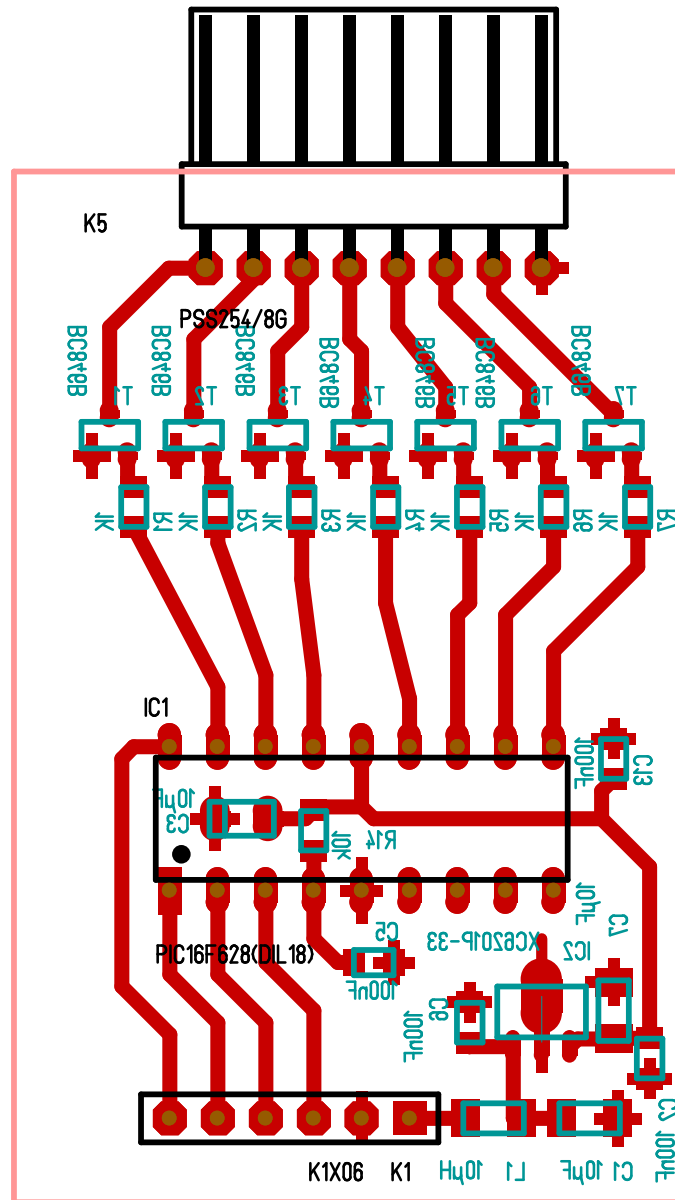
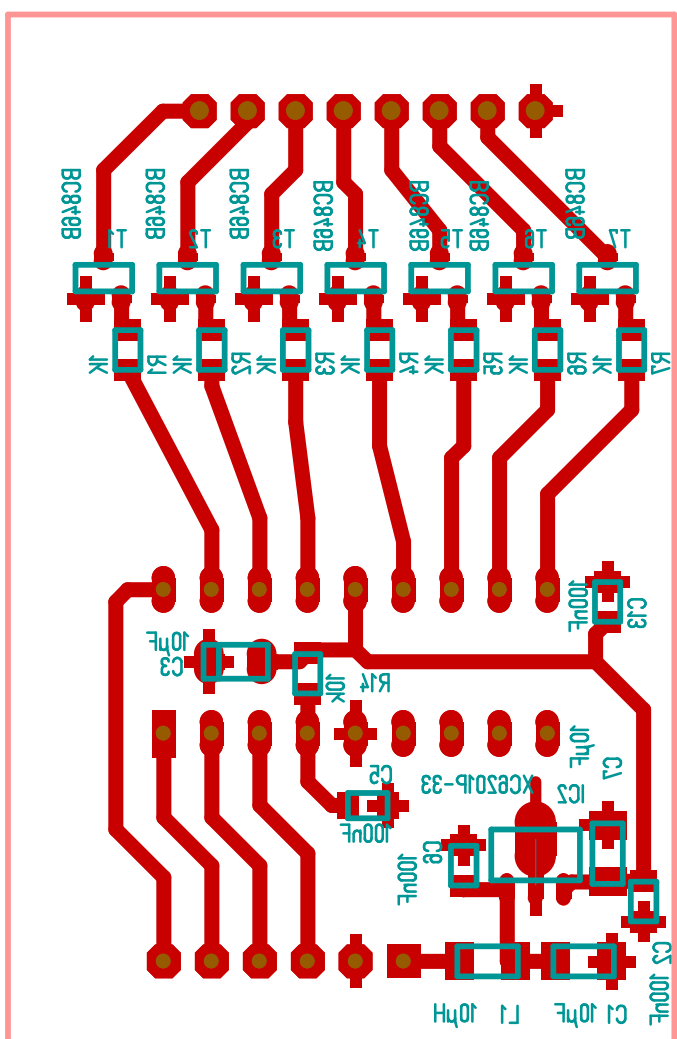


Maßstab	92,66%	Firma	Zeichner	DL2JWL	Blatt	1
Änderung	16.11.20	22:30	Titel	BCD-Decoder		
Ausgabe	21.11.20	16:22				
Datei	RP-Dekoder_DC5MM.T3001		Projekt	Rede Pitaya		



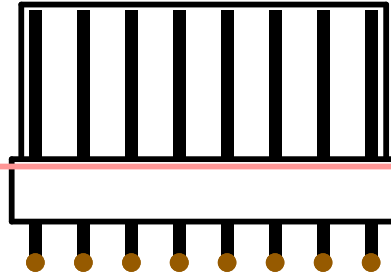






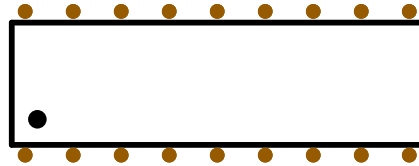


K5



PSS254/8G

IC1



PIC16F628(DIL18)



K1X06 K1



```

; Stückliste=\Red-Pitaya\RP-Dekoder_DC5MM.T3001
; Datum=16.November.2020
;; Platine=<alle Bauteile>
; Autor= DL2JWL
;

```

Pos	Anzahl	Name	Wert	Gehäuse
1	2 Stk.	C1,C2	10µF	1206
2	1 Stk.	C3	10µF	1206_ELKO
3	4 Stk.	C5,C6,C7,C13	100nF	0805
4	1 Stk.	IC1	PIC16F628(DIL18)	DIL18
5	1 Stk.	IC2	XC6201P-33	SOT89
6	1 Stk.	K1	K1X06	1X06_BUCHSE
7	1 Stk.	K5	PSS254/8G	PSS254/8W
8	1 Stk.	L1	10µH	1206
9	7 Stk.	R1,R2,R3,R4,R5,R6,R7	1K	0805
10	1 Stk.	R14	10k	0805
11	7 Stk.	T1,T2,T3,T4,T5,T6,T7	BC846B	SOT23/3